

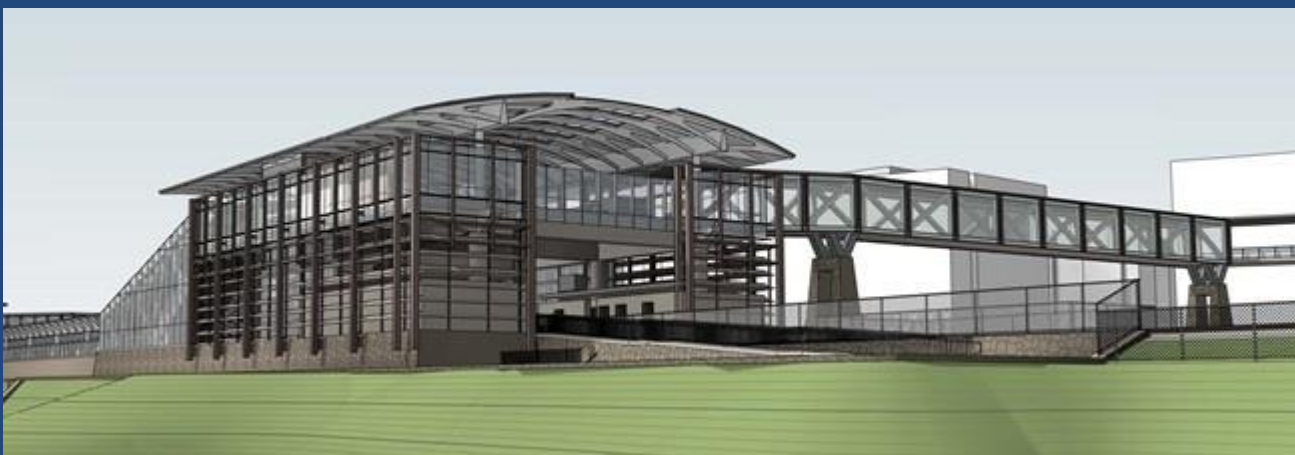


# POTOMAC YARD METRORAIL STATION PROJECT

Potomac Yard Civic Association

Project Update

August 20, 2018





# MEETING PURPOSE

- Contract Award
- Next Steps
- Station Access
- Ongoing Communication

# WMATA DESIGN-BUILD CONTRACT AWARD

- Contract award status
- Includes enhancements to the station access from East Glebe Road
- Contractor's representative will be at next PYMIG meeting on September 26.

# CITY PLAN APPROVAL PROCESS

- Initial application for DSUP amendment submitted by staff on July 18, 2018
- PYMIG meeting on September 26, October, and November
- Planning Commission and City Council Public Hearings anticipated in December
- Board of Architectural Review meetings



# PROJECT DESIGN AND PERMITTING

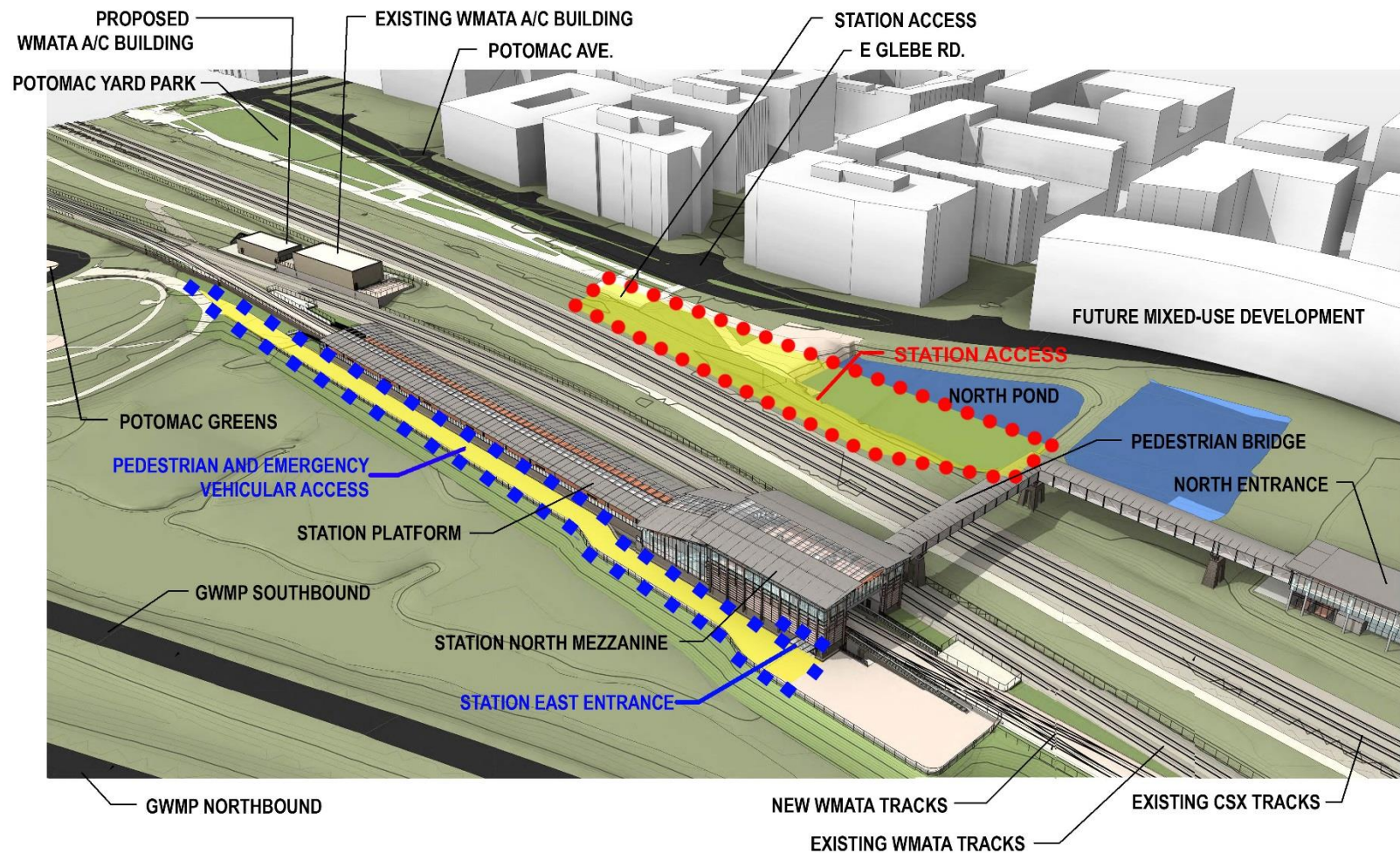
- Design will commence in Fall 2018 and continue thru the Fall of 2019
- Integrated Project Team
  - Contractor
  - WMATA
  - City
- Permitting



# STATION ACCESS

- Contract includes enhancements to access from East Glebe Road
- Refine station access from Potomac Greens
- Public input will be sought on design options at PYMIG meetings

# STATION ACCESS POINTS





# CONSTRUCTION ACTIVITY





# CONSTRUCTION TIMELINE

- Late 2018 - Pre-design site activity
- Late 2019 - Site preparation
- Early 2020 - Initiation of station construction
- Early 2022 - Project completion
- Contractor will provide a schedule

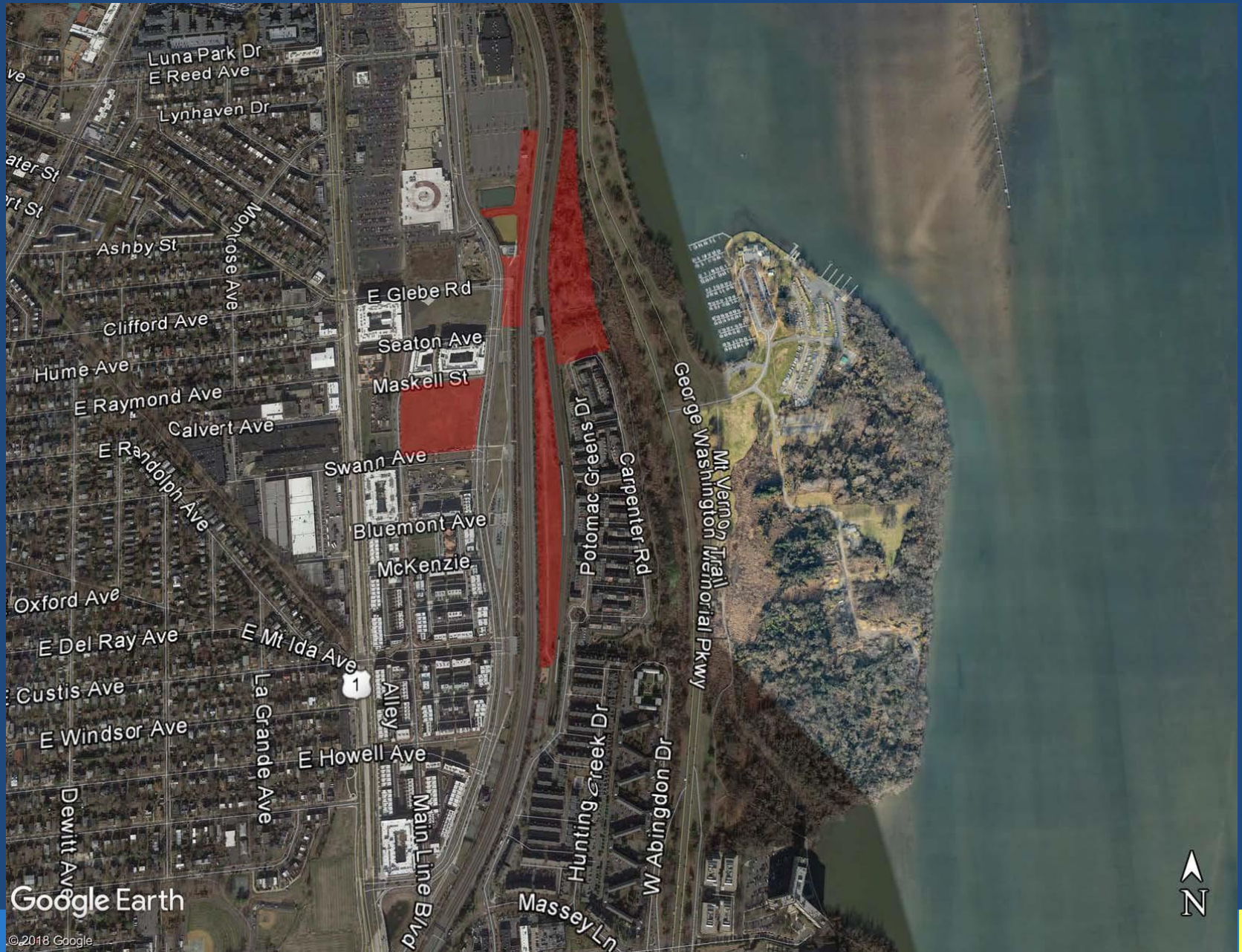
# INITIAL ON-SITE ACTIVITIES

- Contractor information gathering activities on-site
- Mobilize office trailers, laydown areas, and parking facilities
- Bulk of the effort for the first year will be Design and Permitting
- Pre-construction survey of surrounding properties

# INITIAL ON-SITE ACTIVITIES

- Pre-design activities:
  - Land Surveying
  - Geotechnical Investigations
  - Pre-Construction Assessment of Adjacent Buildings
  - Utility Locations and Condition Assessment
- Fencing, clearing, and erosion protection measures associated with this work

# PROJECT MAP



Google Earth

©2018 Google



# CONSTRUCTION IMPACTS AND MITIGATION

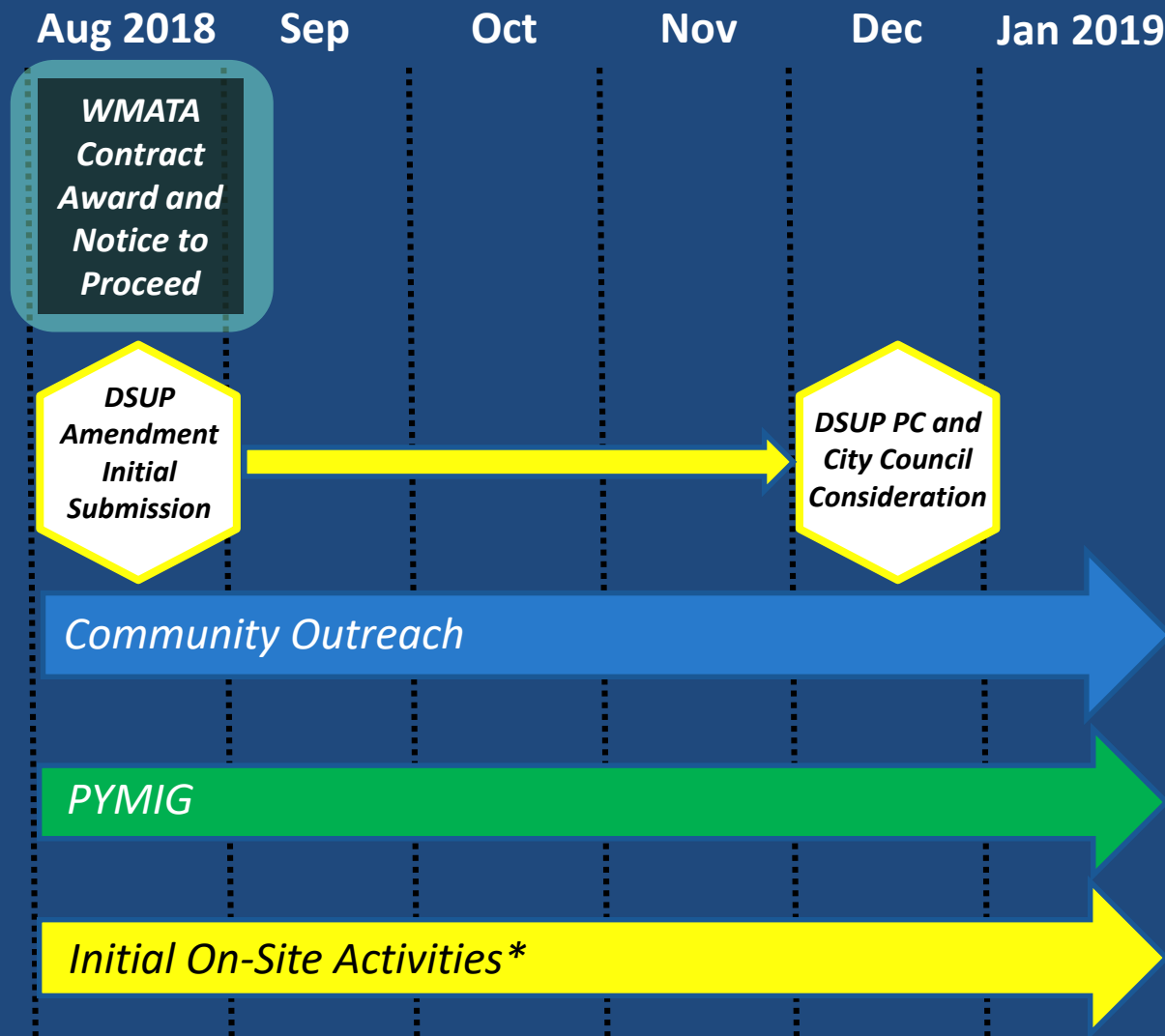
Potential Impacts	Potential Mitigation
Construction Traffic & Parking	Hour of Operation Bus Workers Secure Site Inspector Presence
Contaminated Soils	Testing of Materials Prior to Removal Ensure Proper Handling Soil Management Plan
Night Work	Provide Advance Notice Minimize Frequency



# COMMUNICATION

- Project updates provided:
  - PYMIG meetings
  - Briefings at regular PYCA meetings
  - Pertinent information provided to PYCA leadership, and disseminated to members
  - Project website
  - Alexandria eNews
  - Call or email Jason or Mitch directly

# UPCOMING PROJECT SCHEDULE



\* survey, geotechnical investigations, utility locations, construction trailers





## QUESTIONS?

Additional Info:

Jason Scofi, CCM, PMP

703-746-4060 (Direct)

571-969-0713 (Mobile)

[Jason.Scofi@AlexandriaVA.gov](mailto:Jason.Scofi@AlexandriaVA.gov)

eNews Sign up, select Potomac Yard Metro Station updates:

[www.AlexandriaVA.gov/eNews](http://www.AlexandriaVA.gov/eNews)

For more information, visit:

[www.AlexandriaVA.gov/PotomacYard](http://www.AlexandriaVA.gov/PotomacYard)