

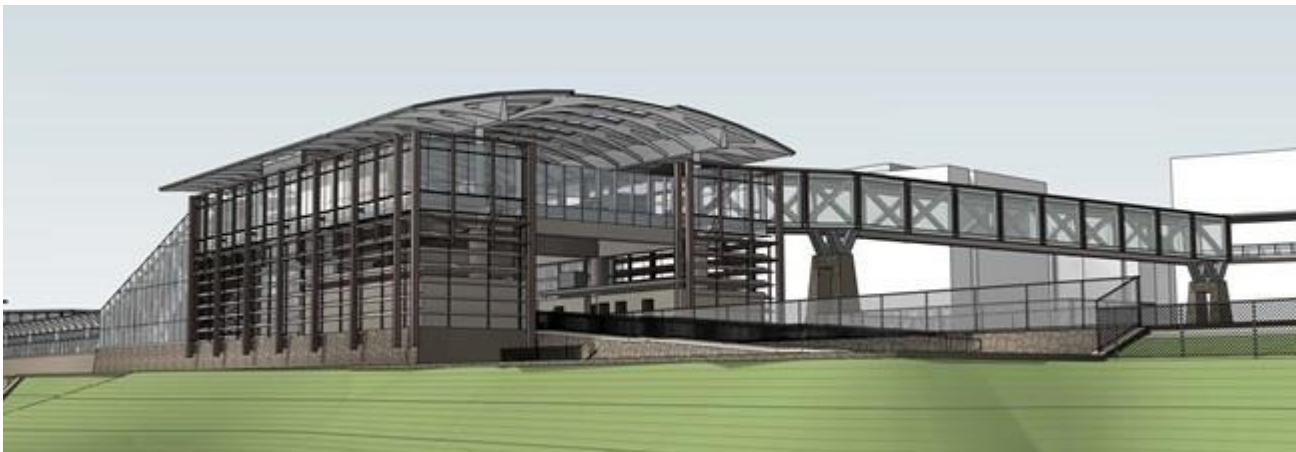
# POTOMAC YARD

## METRORAIL STATION PROJECT

Potomac Yard Metrorail Implementation Work Group (PYMIG)

Station Access Design Considerations

October 3<sup>rd</sup>, 2018



# PURPOSE

- Captured within, is the feedback expressed during the 9/26/18 PYMIG meeting regarding station access design considerations.
- These considerations will be used in developing concepts for further review and discussion by PYMIG and the community.
- We are seeking any additional feedback you may have.
- Potomac Yard Constructors is also reviewing these considerations, along with their own design principles they have been developing for this project.

# ACCESS

- Starts at E. Glebe
- Access from east side
- ADA Accessibility
- Additional access considerations for the visually and hearing impaired
- Distance/Proximity
- Connectivity
- Bicycle parking
- Bicycle routes
- Pedestrian-Bike Rail Crossing
- Pedestrian considerations
- Transit-multimodal connectivity

# DESIGN - EXPERIENCE

- Visual impact on the GWMP
- Visual Integration of new elements into existing park
- Lighting
- Shade
- Sense of arrival
- Sense of place
- Sense of equilibrium
- Cohesive design

# SUSTAINABILITY

- LED lights
- Stormwater management
- Reduction of vehicular trips

# SAFETY

- Crime prevention through environmental design (CPTED)
- Lighting
- Surveillance
- Access
- Security
- Clear sight lines

# COST

- Upfront construction costs
- Maintenance/life cycle costs



Please provide any additional comments and questions to:

Jason Scofi, CCM, PMP

Department of Project Implementation

703-746-4060 (Direct)

571-969-0713 (Mobile)

[Jason.Scofi@AlexandriaVA.gov](mailto:Jason.Scofi@AlexandriaVA.gov)